



MAY WHETTER & GROSE

**206 MANOR VIEW, PAR, PL24 2ER
OFFERS IN EXCESS OF £350,000**



AN IMPECCABLY PRESENTED SPLENDID FAMILY HOME UPDATED AND FINISHED TO A HIGH STANDARD THROUGHOUT, ALL WITHIN A SHORT DISTANCE OF THE COASTLINE, WOODLANDS AND LOCAL AMENITIES IN THE EVER POPULAR MANOR VIEW DEVELOPMENT. A VIEWING IS HIGHLY ESSENTIAL TO APPRECIATE THE HIGH STANDARD OF THIS BEAUTIFULLY PRESENTED HOME. EPC - C



Location

Par is an extremely popular area with an excellent range of local amenities including library, chemist, super market, post office, general stores, public houses and mainline railway station. There are 2 Primary schools within easy reach and a large sandy beach. The town of Fowey is approximately 4 miles away and is well known for its restaurants and coastal walks. The picturesque port of Charlestown and the award winning Eden Project are within a short drive. The Cathedral city of Truro is approximately 20 miles from the property. A wide range of facilities can be found in the nearby town of St Austell. There is a mainline railway station and leisure centre together with primary and secondary schools and supermarket.

Directions

Head out on the A390 to St Blazey Gate, past the petrol station and Four Lords Pub turn right onto Trenovissick Road, head down to the bottom taking the right hand turn into Manor View. Head up to the mini roundabout taking the next right just after the roundabout, head down and the property will appear on the right hand side.

Accommodation

All measurements are approximate, show maximum room dimensions and do not allow for clearance due to limited headroom.

To the front ample tarmac parking for numerous vehicles with paved pathway leading to the front door. High latched gate to the side.

Part obscure double glazed panel door with outside courtesy lighting opens through into entrance hall.

Entrance Hall

Finished with engineered strip wood flooring. Doors to downstairs living accommodation. Door into cloakroom/WC. Wall mounted radiator. The impressive level of finish can be seen immediately.

Cloakroom



Low level WC, hand basin with vanity storage beneath and attractive tiled splashback. High level storage cabinet with display shelving. Wall mounted mirror. Chrome heated towel rail. Obscure double glazed window to side with fitted blind. Tile effect floor covering.

Utility

8'2" x 7'1" (2.50 x 2.16)



Integral part of the garage. There is a garage door to the front, internally this has been split into two useful rooms. Firstly from the hallway is the utility. You will find a tiled worksurface with wood edged beading, incorporating stainless steel sink and drainer with space beneath for white good appliances and further storage. Part tiled wall surround.

Office/Study/TV Room

10'3" x 8'0" (3.13 x 2.45)

Finished with a two tone papered wall surround and carpeted flooring. Wall mounted electric heater. Coving and lighting.

Open door arch into the extended and impressive kitchen/breakfast room area.

Kitchen/Breakfast Room

7'4" widening to 7'6" x 23'11" (2.25 widening to 2.30 x 7.29)



Thoughtfully designed and finished to a high standard. Offering a comprehensive range of wall and base units with under unit LED mixed coloured lighting. Polished speckled granite work surface with matching splash back incorporating stainless steel sink and drainer with mixer tap. Widens through to a solid strip wood bench seat with obscure double glazed window with fitted blind above. Double glazed window to the front with fitted blind. Useful storage beneath for telecommunications, there is also a built in wine rack. Into the former lounge where there is a large breakfast bar with matching work surfaces and low level strip wood. Within the work surface there is a built-in NEFF Hob with automated hidden extractor which is set within the work surface. Opposite, Neff double oven with slide and hide doors, space for American Fridge/Freezer. Further obscure double glazed window with fitted blind and attractive radiator with double part glazed wood doors into the extended living area. This wonderful appointed kitchen is finished with a tile effect floor covering.



Lounge

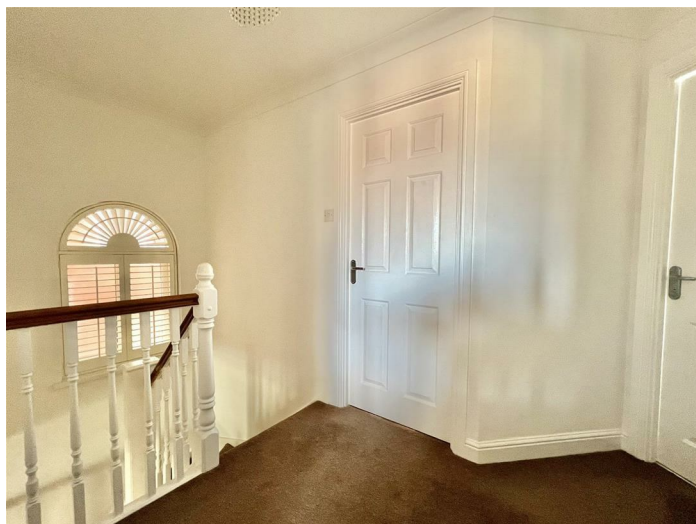
2.47 x 4.53 - maximum incorporating staircase



Via the doors from the kitchen/breakfast room leads through to this impressive relaxation lounge area to the rear with easy access out onto the garden via a set of double doors with window to side. All with fitted blinds and radiator beneath. Lighting, ceiling recesses with wood beam and finished with tiled flooring. This is a fabulous room to entertain with Panasonic Theatre surround sound system. Similar double part glazed doors leads through to the original dining area.

Doors open back into the main entrance hall. Carpeted staircase with handrail turning to the first floor.

Landing



Doors to all upstairs rooms and large loft access with pull down ladder. Wall mounted radiator. Doors to all three double bedrooms, family bathroom and one into an airing cupboard housing the water cylinder with slatted shelving above. On the half landing there is an attractive obscure glazed arched window with fitted wood slatted blinds.

Bedroom

11'7" x 8'0" (3.54 x 2.44)



Located to the rear and enjoying views up towards Trenythorpe Manor and open countryside. Large double glazed window with radiator beneath. In-built mirror fronted wardrobes to both sides and blanket box storage above.

Principal Bedroom

11'7" x 9'0" to in-built wardrobes (3.54 x 2.76 to in-built wardrobes)



Also located to the rear. Elegantly presented with a floor to ceiling range of in-built Hammonds wardrobes. Double glazed window to the rear with radiator beneath. Door through into remodelled modern en-suite.

En-Suite

5'3" x 7'8" - maximum into shower (1.61 x 2.34 - maximum into shower)



Glazed door opening into shower cubicle with fully tiled surround with decorative inserts. Rain effect showerhead and separate attachment with extractor above and recessed lighting. Low level WC and hand basin set into a white gloss vanity storage display unit beneath with open shelving to the side and darkened work surface. Tiled splashback. Mirror cabinets above with open display shelving. Obscure double glazed window with fitted blind to the side and large chrome heated towel rail. All finished with tiled flooring.

Family Bathroom



Similarly finished to a high standard also with low level WC, hand basin set onto a white gloss fronted cabinet with darkened work surface over. Large chrome heated towel rail. Vanity mirror with lighting above. Shaver socket. Obscure double glazed window to the front. Ceiling mounted spotlights and extractor. Bath with shower over with rain effect shower head and separate attachment over. Attractive tiling.

Bedroom

12'8" x 9'4" - maximum (3.87 x 2.86 - maximum)



Located to the front. Also benefitting from thoughtfully designed in-built Hammond wardrobes from floor to ceiling. double glazed window to the front with radiator beneath.

Outside

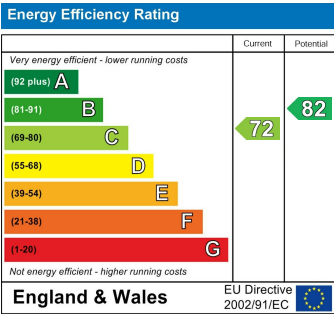


To the front ample tarmac driveway and gated access leads around to an open and useful side storage area. This widens to the rear onto a gentle tiered paved patio area and out onto an expanse of wood decking, all enclosed by strip wood fencing to all three sides.

Down to a sunken hot tub area, included in the sale.



Council Tax Band - C





GROUND FLOOR
711 sq.ft. (66.1 sq.m.) approx.



1ST FLOOR
519 sq.ft. (48.2 sq.m.) approx.



TOTAL FLOOR AREA : 1231 sq.ft. (114.3 sq.m.) approx.

Whilst every attempt has been made to ensure the accuracy of the floorplan contained here, measurements of doors, windows, rooms and any other items are approximate and no responsibility is taken for any error, omission or mis-statement. This plan is for illustrative purposes only and should be used as such by any prospective purchaser. The services, systems and appliances shown have not been tested and no guarantee as to their operability or efficiency can be given.
Made with Metropix ©2024

Important Notice MISREPRESENTATION ACT 1989 and PROPERTY MISDESCRIPTIONS ACT 1991

Messrs. May, Whetter & Grose for themselves and for vendors and lessors of this property whose agents they are give notice that: (i) the particulars are set out as a general outline for the guidance of intended purchasers or lessees, and do not constitute, nor constitute part of, an offer or contract; ii) all descriptions, dimensions, reference to condition and necessary permissions for use and occupation, and other details are given without responsibility and any intending purchasers or tenants should not rely on them as statements or presentations of fact but must satisfy themselves by inspection or otherwise as to the correctness of each of them. (iii) no person in the employment of Messrs. May, Whetter & Grose has any authority to make or give any representation or warranty whatever in relation to the property.

